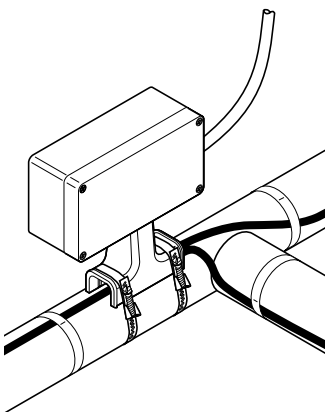


MFS-100-E

Cold applied integrated power connection for 1 heating cable. One power cable gland included. Suitable for use with all **SANTO** industrial self-regulating or power-limiting heating cables in hazardous and non-hazardous areas. Requires 1 pipe strap, to be ordered separately.

MFS-100-EP

Cold applied integrated power connection for 1 heating cable. Includes earth plate and earth stud for use with armoured cables. Suitable for use with all **SANTO** industrial self-regulating or power-limiting heating cables in hazardous and non-hazardous areas. Requires 1 pipe strap and 1 metal power cable gland to be ordered separately.

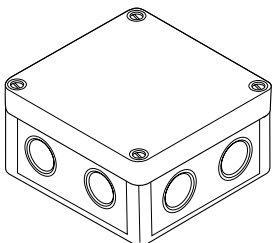


MFM-100-E

Cold applied integrated power connection for up to 3 heating cables. May also be used for tee and splice connections. One power cable gland included. Suitable for use with all **SANTO** industrial self-regulating or power-limiting heating cables in hazardous and non-hazardous areas. Requires 2 pipe straps, to be ordered separately.

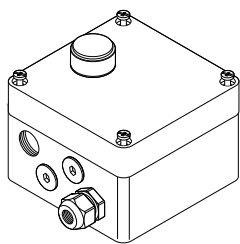
MFM-100-EP

Cold applied integrated power connection for up to 3 heating cables. Includes earth plate and earth stud for use with armoured cables. May also be used for tee and splice connections. Suitable for use with all **SANTO** industrial self-regulating or power-limiting heating cables in hazardous and non-hazardous areas. Requires 2 pipe straps and 1 metal power cable gland, to be ordered separately.



MF-82

The **MF-82** is a standard, non-hazardous polycarbonate junction box. Up to four heating cables or three heating cables and the appropriate size power cable can be accommodated through the four entries and connected to the rail mounted terminals



MFS-100-L-E

This junction box provides four M25 threaded entries, stopping plugs and one plastic power cable gland. Suitable for use with all **SANTO** industrial self-regulating or power-limiting heating cables in hazardous and non-hazardous areas. Connection kits (M25), insulation entry kits and support bracket have to be ordered separately.

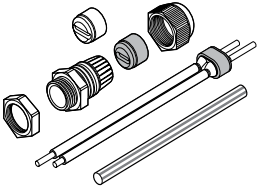
Also available with a green light for basic monitoring.

MFS-100-L-EP

This junction box provides four M25 threaded entries, an earthing plate and an external earth stud. It is designed for use with armoured power cables and metal glands. Suitable for use with all **SANTO** industrial self-regulating or power-limiting heating cables in hazardous and non-hazardous areas.

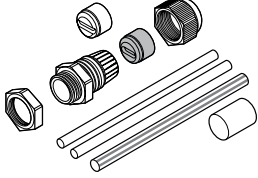
Metal power cable gland, connection kits (M25), insulation entry kits and support bracket have to be ordered separately.

Also available with a green light for basic monitoring.



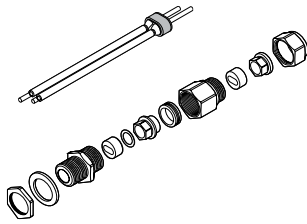
U25-100

These cold applied connection kits are designed for terminating all **SANTO** self-regulating and power-limiting industrial parallel heating cables to a junction box with an internal earth plate, whilst maintaining electrical insulation of the heating cable conductors and core. These kits are made from brass, but are also available in a nickel plated version



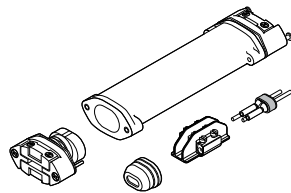
U25-21

This hot applied connection kit is designed for terminating all **SANTO** self-regulating and power-limiting industrial parallel heating cables to a junction box in hazardous and non-hazardous areas, whilst maintaining electrical insulation of the heating cable conductors and core.



U25-100-METAL AND C3/4-100-METAL

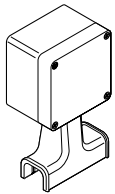
These cold applied connection kits are designed for terminating all **SANTO** self-regulating and power-limiting industrial parallel heating cables to a junction box with an internal earth plate, whilst maintaining electrical insulation of the heating cable conductors and core. These kits are made from brass, but are also available in a nickel plated version



CS-150-E

Cold applied low profile power connection for one heating cable for use in hazardous and non-hazardous areas. Maximum load of 25 A. Suitable for non-armoured power cables up to 2.5 mm² with stranded copper conductors
CS-150-E is used as a connection kit:

- Where connection to a junction box is difficult e.g. because of space limitations on instrument lines or loading arms
- Where installation of under insulation components is preferred as a cost effective alternative for **MFS-100-E** on short lines
- The kit is not suitable for use with **ABB** heating cables.

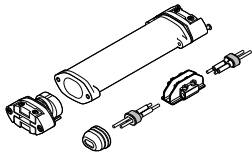


FMT-100

Cold applied kit for making tee or splice connections with crimps, above the insulation in hazardous and non-hazardous areas. Requires 2 pipe straps, to be ordered separately.

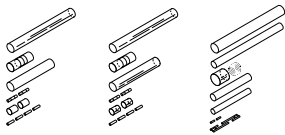
Required crimp tool, reference: **FMT-100**

Suitable for use with all **SANTO** industrial self-regulating or power-limiting heating cables.



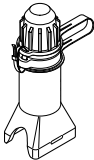
CS-150-UNI-PI

Cold applied low profile splice kit for making splice connections with terminals under the insulation in hazardous and non-hazardous areas. Not suitable for use with **ABB** heating cables



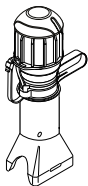
CS-19/CS-21/CS-69

Hot applied under insulation splice kits for use in hazardous and non-hazardous areas. **CS-19** is for use with **UFA** heating cables, **CS-21** is for use with **UFB** heating cables and the **CS-69** is for use with **UFC** and **UFO** heating cables.



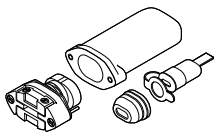
FAST-100

Cold applied mechanical end seal for use in hazardous and non-hazardous areas, above insulation for easy access for testing. Requires 1 pipe strap, to be ordered separately. Suitable for use with all **SANTO** industrial self-regulating or power-limiting heating cables.



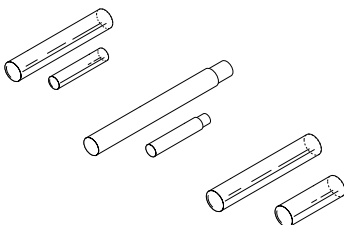
FAST-100-L-E

Cold applied mechanical end seal with green LED light module for use in hazardous and non-hazardous areas, above insulation for easy access for testing. Requires 1 pipe strap, to be ordered separately. Suitable for use with all **SANTO** industrial self-regulating or power-limiting heating cables.



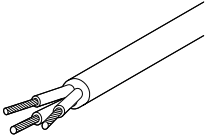
JQH-LEC

Cold applied low profile end seal for use in hazardous and non-hazardous areas. Not suitable for use with **ABB** heating cables.



JQH-06/ JQH-19/ JQH-50

Hot applied under insulation end-seal kits for use in hazardous and non-hazardous areas. **JQH-06** is for use with **UFA** and **UFB** heating cables, the **JQH-19** is for use with **UFC** and **UFO** heating cables and the **JQH-50** is for use with the **ABB** heating cables.



C-150-PC

3-core flexible power cable for connection to C-150-E. 3 x 2.5 mm², silicone insulation, temperature range: -40°C to +180°C, short term: 215°C



JSBQ

Self-adhesive warning label: For proper marking of electrical heat-tracing systems. One label per 5 m of traced pipe. Also available in other languages.

CW-LAB-NH

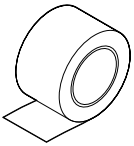
Self-adhesive warning label stabilised design for ABB, English, French and German.



GT-66 AND GS-54

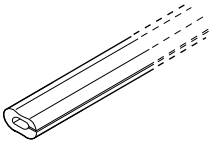
GT-66: Glass fibre fixing tape for polymer insulated heating cables on pipes. Not suitable for use on stainless steel pipes. 20 m/roll, width: 12 mm.

GT-54: Glass fibre fixing tape for polymer insulated heating cables on stainless steel pipes. Low halogen, 16 m/roll, width: 12 mm.



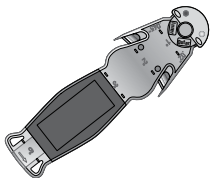
ATE-180

Aluminium adhesive tape, low halogen, for polymer insulated cables on tanks and pipes. Min. recommended installation temperature: 0°C. 55 m/roll, width: 63.5 mm



G-02

Silicone rubber sleeve, mechanically protects heating cables on edges, flanges, insulation cladding and end plates. Cut-to-length on-site. 1 m long. Temperature resistant up to 215°C.



BXQ-SR-CABLE

Stripping tool designed for use with UFA, UFB, UFC and UFO self-regulating heating cable.